

FOSTERING A CULTURE OF INCLUSION



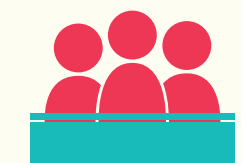
National results are shown in BLACK |

results are shown in GRAY & WHITE

A welcoming campus empowers everyone to succeed. Understanding the connections between institutions, students, faculty, and staff provides the information needed to promote change.

Students take advantage of opportunities to engage across difference...

...And frequently interact with people unlike themselves.



48%

Attended debates or panels about diversity issues



40%

Participated in ongoing campus-organized discussions on racial/ethnic issues



44%

Made an effort to get to know people from diverse backgrounds



46%

Interacted with someone from a different country



27%

Participated in LGBTQ Center activities



44%

Frequently discussed issues related to sexism, gender differences, or gender equity



64%

Interacted with someone from a different religion



65%

Interacted with someone from a different socioeconomic background

Students strongly agree that their institution values diversity...

...And they take courses that include:



28%

Encouraging them to voice their ideas publicly



30%

Appreciating differences in sexual orientation



36%

Promoting the appreciation of cultural differences



55%

Studying and serving communities in need



61%

Reading about privilege

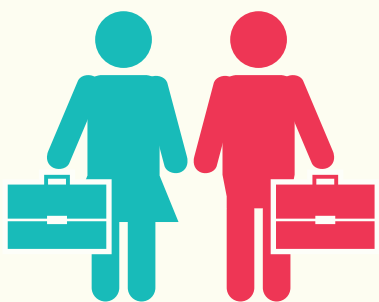


68%

Intensive dialogue between diverse groups of students

Faculty and staff are critical to developing students' sense of community.

However, fostering an inclusive campus is a work in progress.



89%

Believe faculty members empower them to learn



76%

Believe that staff members have recognized their achievements



58%

Witnessed discrimination on campus



18%

Experienced sexual harassment



65%

Heard insensitive or disparaging racial remarks from students



52%

Are satisfied with the racial/ethnic diversity of the faculty



53%

Are satisfied with the racial/ethnic diversity of the student body



Understanding the connections between campus climate, institutional practices, and student learning outcomes provides you with the information you need to foster change. With insight from the Diverse Learning Environments Survey, you'll be one step closer to creating the campus climate necessary for student success.