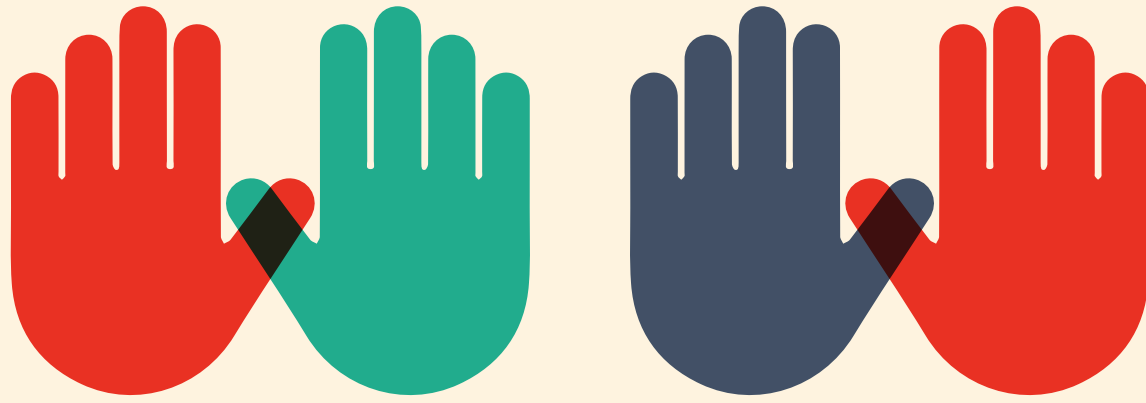


ENGAGING WITH DIVERSITY



National results are shown in NAVY |

results are shown in GRAY

More than ever, colleges and universities aim to foster a collaborative environment and a stronger community of learners. In order to create more inclusive environments, institutions must understand their students' commitment to diversity.

Students consider understanding and navigating diverse environments among their strengths:



85%
Seeing the world from someone else's perspective



74%
Discussing and negotiating controversial issues



91%
Working cooperatively with diverse people

While most students generally believe their campus welcomes diversity...



90%
Believe their college encourages students to have a public voice and share ideas openly

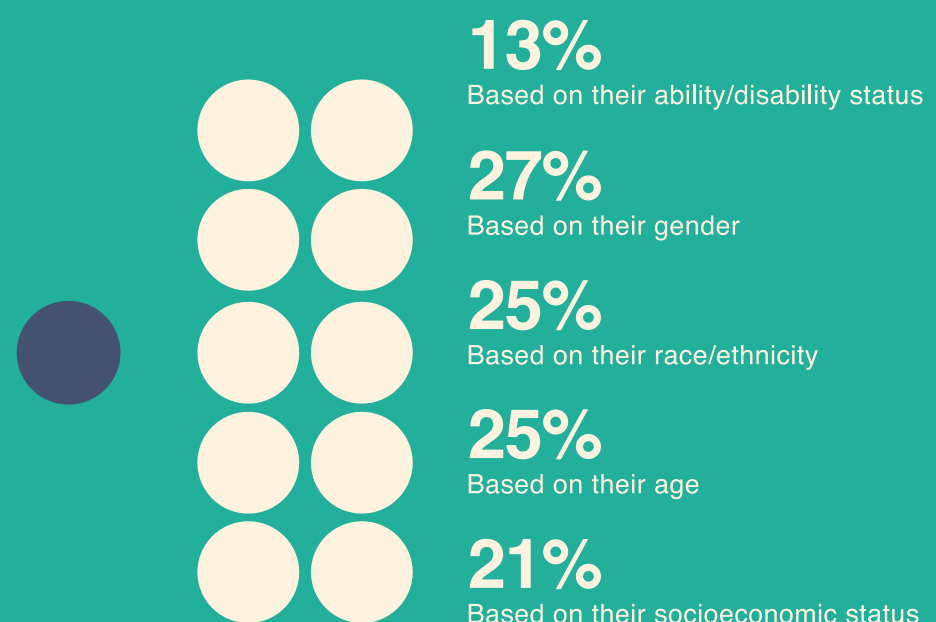


81%
Believe their college administrators regularly speak on the value of diversity

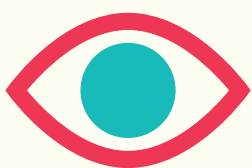


74%
See themselves as part of the campus community

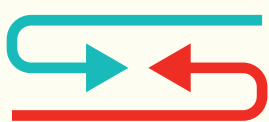
...some have been discriminated against or excluded.



And reporting discrimination remains an issue.



51%
Have witnessed discrimination



35%
Frequently challenged others on issues of discrimination

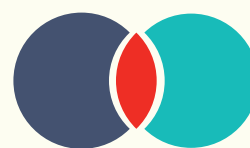


11%
Reported discrimination to a campus authority

Nonetheless, students are committed to understanding diverse identities.



66%
Attended programs focused on diversity



49%
Participated in campus-organized discussions on race/ethnicity



47%
Participated in campus center activities about identity